

ABOUT THE WORKSHOP

With its heterogeneity and conflicts, its divisions and connections, the Mediterranean Sea offers an extraordinary microcosm. Our planet faces common challenges that escape the limitations of national states and of their bordered thinking. And yet, our political and social practices remain constrained by the mental and material borders of the nation. Until the creation of the Schengen space, the border between Sicily and Tunisia was porous. While Sicily and Tunisia have historic ties, the two countries feature contemporary realities that are starkly different from one another: How can we envision concrete practices of cooperation that unite citizens between two Mediterranean cities, divided by continent but connected by sea?

The Mittelmeerland Organisation has established an intercultural network of workshops, exhibitions and other programmes in the Mediterranean. Further information: www.mittelmeerland.org

OPEN CALL

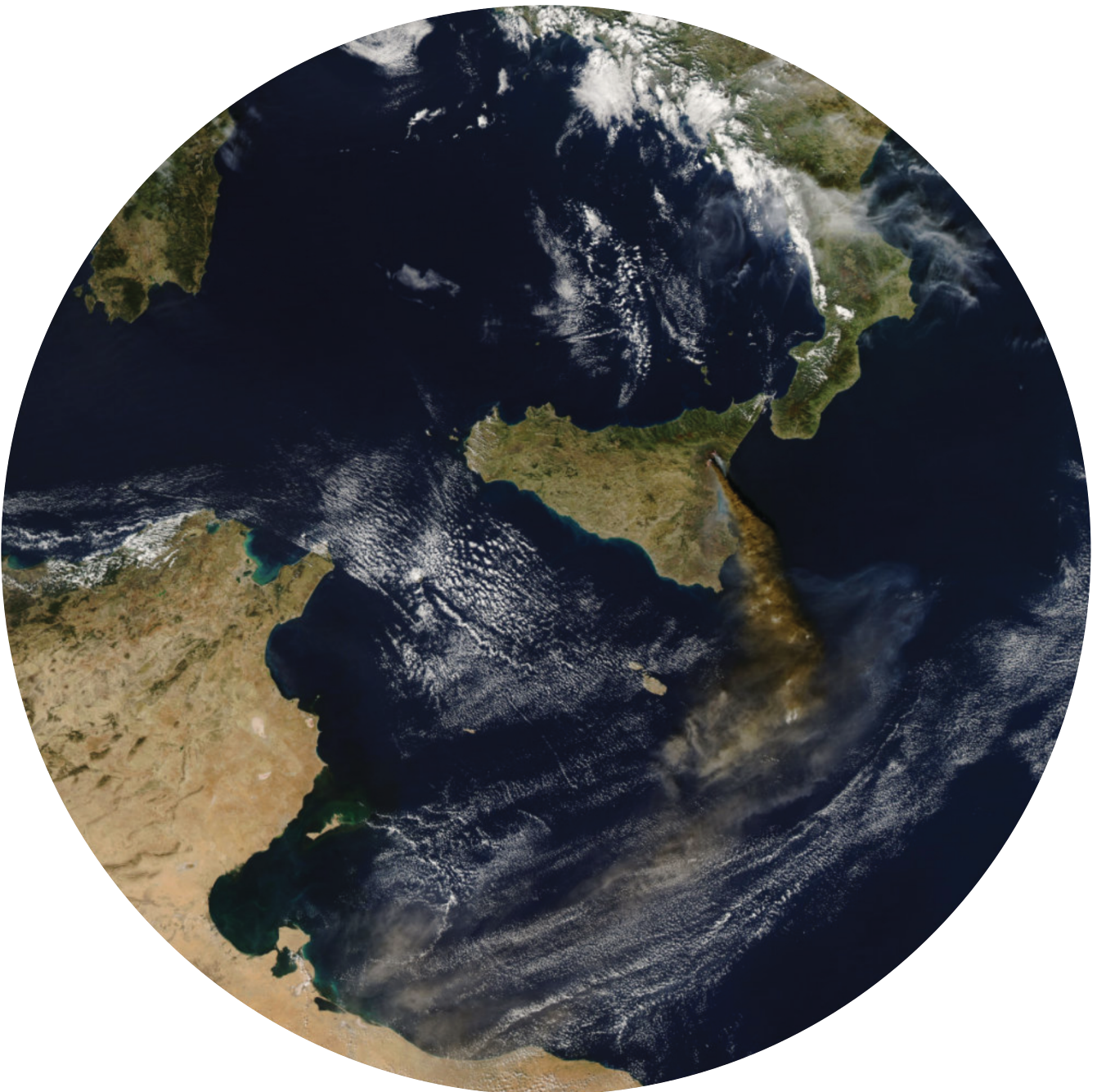
We are calling for participants for our next Workshop from 01-09 October 2021 at the Ecomuseo Urbano Memoria Mare Viva in Palermo. Participation is free of charge and open to students and professionals of Urbanism, Architecture, Sociology and Art. There are different levels of participation: as full- or part-time participant. All participants travelling from abroad are responsible for organising visa, travel and accommodation. To register please send a short email with your profile to Medine Altiok and Stephanie Tunka: mittelmeerland@gmail.com

Participants of the workshop, and related activities, enrolled in the Order of Architects PPC of the Province of Palermo, will be recognised 6 CFPs.

MITTELMEERLAND WORKSHOP PALERMO-TUNIS

www.mittelmeerland.org

01-09 October 2021



PARTNERS / IN COLLABORATION WITH

STUDIO
RIZOMA

L'Art Rue
الشارع فن

THEATER BREMEN



KULTURSTIFTUNG
DES
BUNDES

Die Beauftragte der Bundesregierung
für Kultur und Medien

Allianz
KulturStiftung
... for Europe



GOETHE
INSTITUT

RAI
DIPARTIMENTO
DI ARCHITETTURA
UNIPA

appcra
ordine degli
architetti
professionisti
pannelli
dell'architettura
di
palermo

MITTELMEERLAND WORKSHOP PALERMO–TUNIS

TIMESCHEDULE: 01-09 OCTOBER 2021

LOCATION: Ecomuseo Urbano Mare Memoria Viva in Palermo

1. DAY / Friday 01 OCTOBER INTRODUCTION AND PREPARATIONS

09:30–12:00

Lecture: Urban Portrait + Landscape Ecology
by Medine Altiok

13:00–17:30

Studio Work

2. DAY / Saturday 02 OCTOBER URBAN PORTRAIT AND LANDSCAPE ECOLOGY

10:00–12:00

Walk: New and Old Migration in front of the old City
by Valentina Mandalari

Meet / Start @ Foro Italico

13:00–14:00

Studio Work

3. DAY / Sunday 03 OCTOBER URBAN PORTRAIT AND LANDSCAPE ECOLOGY

14:00–16:00

Walk: Future Plannings along the Port
by Barbara Lino

Meet / Start @ Sant'Erasmo Port

4. DAY / Monday 04 OCTOBER URBAN PORTRAIT AND LANDSCAPE ECOLOGY

09:30–11:20

@ Casa della Cooperazione

Via Ponte di Mare 45/47

www.cissong.org/casa-della-cooperazione/

Lecture: Ecology and Marine Environment
by Geraldina Signa

Lecture: Environmental Design
by Stephanie Tunka

11:30 - 14:30

Walk: Wasteland along the Coast
by Pietro Airoidi

Meet / Start @ Casa della Cooperazione

5. DAY / Tuesday 05 OCTOBER URBAN PORTRAIT AND LANDSCAPE ECOLOGY

09:30–12:00

Studio Work

15:00 –17:30

Mid Presentation with Guests

6. DAY/ Wednesday 06 OCTOBER NARRATIVE MAPPING AND IMAGINATIVE COLLAGES

09:30–12:00

Lecture: Narrative Mapping + Imaginative Collages
By Medine Altiok and Stephanie Tunka

Lecture: The New Territories of Architecture
by Ibai Rigby

13:00–17:30

Studio Work

7. DAY / Thursday 07 OCTOBER NARRATIVE MAPPING AND IMAGINATIVE COLLAGES

09:30–17:30

Studio Work

8. DAY / Friday 08 OCTOBER BRINGING EVERYTHING TOGETHER

09:30–17:30

Studio Work

9. DAY / Saturday 09 OCTOBER FINAL PRESENTATION OF RESULTS

09:30–12:00

Studio Work

14:00 –16:00

Final Presentation with Guests

Eligibility / Costs:

The Workshop is open to Students + Professionals of Urbanism, Architecture, Sociology and Art. Participation is free of charge.

Equipment requirement:

Participants need their own laptop with a CAD Programme and Adobe Indesign+Photoshop or Affinity Publisher+Photo

Accreditation:

Participants of the workshop, and related activities, enrolled in the Order of Architects PPC of the Province of Palermo, will be recognised 6 CFPs.

Tutors / Local Collaborators:

Ibai Rigby, Rita Elvira Adamo, Barbara Lino, Pietro Airoidi, Cristina Alga, Valentina Mandalari

Programme Directors:

Medine Altiok, Stephanie Tunka

Registration + Contact:

mittelmeerland@gmail.com

Mobile + Whatsapp +41 78 740 22 32

Partners / In Collaboration with:

Studio Rizoma, Dream City Biennale Tunis, Theater Bremen, Ecomuseo Urbano Mare Memoria Viva, Kulturstiftung, BKM, Allianz Kulturstiftung, Goethe Institut Palermo, appcpa, Department of Architecture University of Palermo

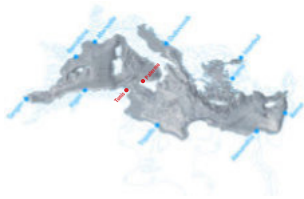
MITTELMEERLAND 07 PALERMO & TUNIS 2021/22

01 DUBROVNIK 2011
02 TANGIER 2011
03 BEIRUT 2012
04 ALGIERS 2012
05 ALEXANDRIA 2013
06 IZMIR 2015



Image: Mittelmeerland Alexandria by Ibai Rigby, 2013

MITTELMEERLAND CONCEPT & WORKSHOPS



'(Social) space is a (social) product.' Henry Lefebvre

'Henry Lefebvre's theory opened up new ways of understanding of today's processes of urbanization and their conditions and consequences at any scale of social reality: from the practices of everyday life, through the urban scale, to the global flows of people, capital, information and ideas.' from the Conference Rethinking theory, space and production: Henry Lefebvre Today

The Mediterranean Sea is not only situated between continents, but also acts as a historical and contemporary centre and border zone. The social, economic and political dynamics of this zone are complex. In the last century the Mediterranean has been separated through politics, religions, fear of clash of cultures etc. Unified by climate and the history of civilization, the Mediterranean region has the potential to be seen as a geographic unit. Over the next 15 years major Mediterranean port cities expect rapid changes, because of the growth of global trade and container shipping. Regardless of current national borders, cultural and economic transformations the fact is that the Mediterranean Basin is among the four most significantly altered biodiversity hotspots on Earth.

Mittelmeerland uses a comparative approach looking at Mediterranean Sea as a territory with detailed case studies of locations along the coast. By analyzing current urbanization processes and future developments we aim to generate strong, narrative statements in the field of Urbanism, Architecture, Sociology and Art. Approaching cities from the sea we initiated a series of workshop sessions in Dubrovnik (Croatia), Tangier (Morocco), Izmir (Turkey), Algiers (Algeria), Alexandria (Egypt), Beirut (Lebanon) and Tunis (Tunisia) & Palermo (Italy).

The purpose of the workshops is to examine how the Mediterranean region can position itself as a 'territory', one that is based on climatic and economic conditions, and subject to specific social, political and spatial dynamics and experiences. What can each city do to turn the Mediterranean from one of the largest Hotspots of the world into an Eco Spot? How can the Mediterranean Sea region position itself as a 'territory'? How can the cities strengthen the network between cities? What does changing and shaping urban space mean for the 1:1 everyday use of spaces? What are similarities and differences between cities?

The workshops are conducted together with local and international students of urbanism, architecture and related disciplines and involve the expertise of professionals, cities, institutes etc. in the research and design process during the preparation and as well as while being on site. Further, during each workshop a one-day symposium is taking place.

MITTELMEERLAND "TRAVEL BOOKS"

The results of the research in Dubrovnik, Tangier, Beirut, Algiers, Alexandria and Izmir are published as "Travel Books": six catalogues of about 250 Pages each including the fieldwork, an essay and statements from our collaborators. The research project culminated in February 2017 with an exhibition in the AA School of London which subsequently travelled to the workshop's cities. Selected part of the work was also shown in the Egypt Pavilion at the 2016 Architecture Biennale in Venice.

An additional "Travel Book" will be published about the results in Tunis & Palermo: a catalogue of about 250 pages including the fieldwork focusing on the relationship of the two ports and the sea in-between, a critical essay and statements from our collaborators. Further, an exhibition will be prepared comparing Tunis & Palermo with the other locations.

Directors

Medine Altioch
Stephanie Tunka

MITTELMEERLAND Organisation

Sihlfeldstrasse 175
CH-8004 Zurich
Phone +41 78 740 2232
mittelmeerland@gmail.com
www.mittelmeerland.org

MITTELMEERLAND TUNIS & PALERMO SITE

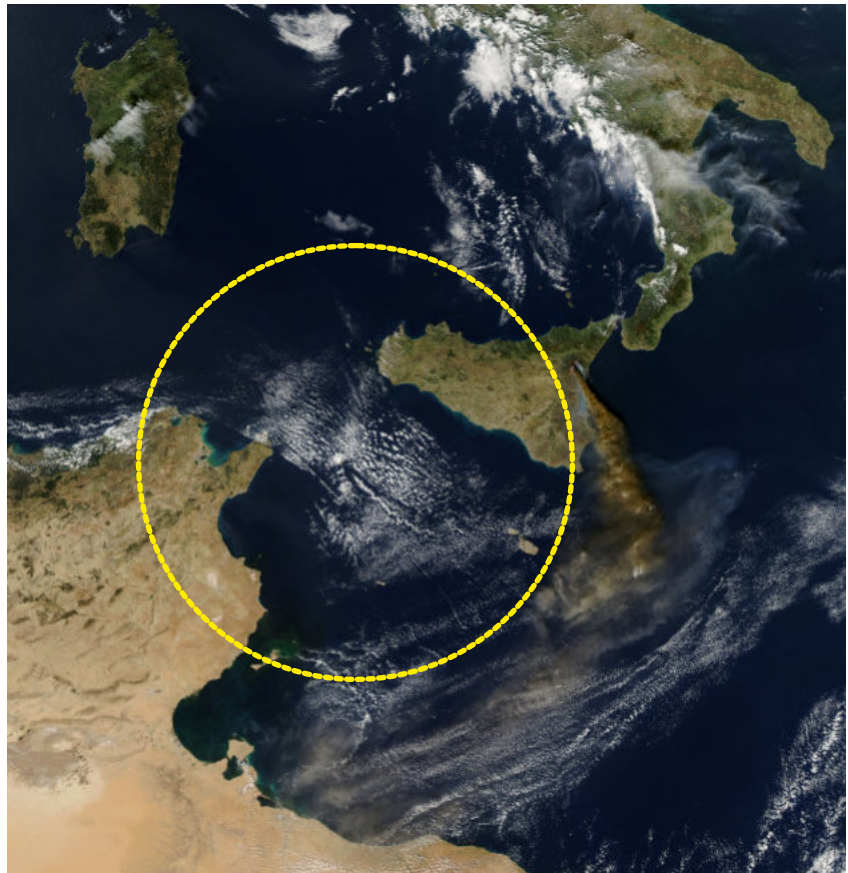
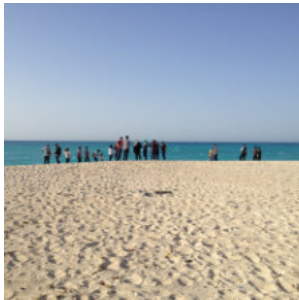


Image: NASA Visible Earth

With its heterogeneity and conflicts, its divisions and connections, the Mediterranean Sea offers an extraordinary microcosm of our planet as a whole. Our planet faces common challenges that escape the limitations of national states and of their bordered thinking. And yet, our political and social practices remain constrained by the mental and material borders of the nation. Until the creation of the Schengen space, the border between Tunisia and Sicily was porous: goods as well as seasonal workers, businessmen as well as ordinary citizens crossed the Mediterranean in both directions for work, tourism, curiosity, or family.

While Tunisia and Sicily have historic ties, the two countries feature contemporary realities that are starkly different from one another: How can we envision concrete practices of cooperation that unite citizens between two Mediterranean cities, divided by continent but connected by sea? The two spaces become a microcosm in bridge-making between north and south. Putting the cities of Tunis and Palermo at the centre stage of this concrete attempt at unionising, what can local cross-border alliances and practices between the two cities and their various interest groups set in motion? If the Mediterranean offers a prism through which to observe and understand our world, envisioning new unions that cross and connect its two shores becomes a concrete gesture of healing for a divided planet.

MITTELMEERLAND TUNIS & PALERMO PROGRAMME



Fieldwork

WORKSHOP

01–10.10.2021 in PALERMO & next year: 05–15.10.2022 in TUNIS

Duration: 10 days with 10-15 participants

Tutors: Medine Altiok, Stephanie Tunka, Ibai Rigby, Rita Adamo and local Collaborators

We will study the port area of Palermo and Tunis and the sea territory between the two ports looking from the perspective of the sea. We will focus on three border conditions:

- Port and City
- Port and Sea
- Palermo and Tunis

Using the same methodology that was already developed in the previous Mittelmeerland workshops, we will work on the port areas and the sea between Palermo and Tunis, identify existing conditions and future projections, playfully utilize small-scale phenomena, translating found conditions into large-scale landscape ecologies and envisioning urban changes. We will detect and uncover hidden phenomenological spaces and visualize our findings in large perspectival drawings, narrative maps and imaginative collages. We will critically discuss situations that could be improved.

EXHIBITION AT SYNDICATE! SUMMIT

19–23.10.2021 in PALERMO & in TUNIS

We will document the results of the workshops in Tunis & Palermo in a “Travel Book” (a catalogue in A4 size with 250 pages) with the focus the relationship of the two ports and the sea in-between Tunis & Palermo. The “Travel Book” will include a critical essay and the material produced during the workshops consisting of urban portraits, narrative maps, perspectival drawings and imaginative collages.

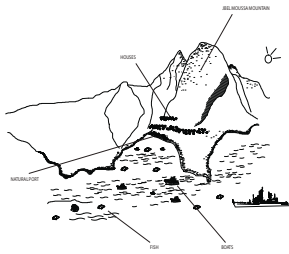
Exhibition Material:

- “Travel Books”: Dubrovnik, Tangier, Beirut, Algiers, Alexandria, Izmir (each ca. 250 pages, A4, colour)
- “Travel Book”: Tunis & Palermo (ca. 250 pages, A4, colour)
- 9 Posters: (each 2.5m x 1m)
- a digital slideshow



Exhibition

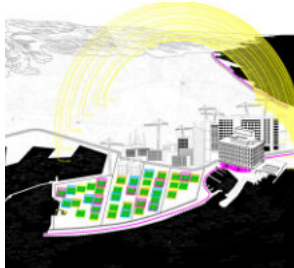
MITTELMEERLAND WORKSHOP METHODOLOGY AND STRUCTURE



Urban Potrait



Narrative Mapping



Landscape Ecology



Imaginative Collages

We will survey the port area along the coast and its borders on land and in sea. We will capture the specific genius loci and study the relation between sea and land. We will look at the industrial harbour, its programming, its borders, spatial typologies around, formal-informal, history, climate, culture, patterns of behaviour, migration and trade, routing, infrastructures, how open space is used, social interactions etc.

The workshop will start with following preparation work:

- Base map
- Base perspective
- Data Collection

Participants will then work along four modules/ exercises:

- How to see? Producing Urban Portraits
- How to play? Making Narrative Mapping
- How to act? Managing Landscape Ecology
- How to tell? Explaining Imaginative Collages

Research will be done by means of: 1. Taking measures by hand, 2. Interviewing inhabitants, 3. Taking photographs on site, 4. Writing short scenarios and critical statements, 4. Making axonometric line drawings with Illustrator, 5. Modelling Landscape and Data, 6. Making Image Collages with Photoshop.

We will have an general introduction, travel the whole site together and organize lectures related to the topics of the modules. We will invite local institutions and architects to participate as visiting critics or guide us through the sites or lectures about specific aspects.

A final presentation will take place as part of a public discussion with invited architects, artists, experts and researchers, who will reflect on the topics.

PARTICIPANTS

The workshop is open to all students and professionals worldwide of Urbanism, Architecture, Sociology and Art.

PARTNERS + SUPPORTERS

Studio Rizoma, Dream City Biennale Tunis, Theater Bremen, Ecomuseo Urbano Mare Memoria Viva, Teatro Biondo, Kulturstiftung, BKM, Allianz Kulturstiftung, Rosa Luxemburg Stiftung, Goethe Institut Palermo, Department of Architecture University of Palermo

MITTELMEERLAND

PREPERATION WORK

1. CREATING A BASEMAP

Instruction will be given by Medine Altiok, Stephanie Tunka

2. CREATING A BASEPERSPECTIVE

Instruction will be given by Medine Altiok, Stephanie Tunka

3. COLLECTING DATA

Please always give sources, web links, where the information comes from use internet, library or experts and use the given layout format for the final presentation

General

- Site (text, images CAD files, if available of whole coastline including hights in water and land)
- Aerial photo (1:1000 high res from google earth)
- Size of the area
- Density: FAR, Building Typologies, how many people?
- Zoning: land use, mix of functions
- Facts + figures (from internet, library or experts)

History

- History
- Collect historical Maps and images
- Timeline (historical development, maps, text, images)

Environment

- Topography, geography
- Location (latitude, longitude)
- Climate Data
- Diagrams: Wind, Sun Angles, Rain Fall, Temperatures monthly, yearly average, Radiation, Shading, Orientation, Water
- Pollution
- Observations and Conclusion
- Actions on the environment
- Potential for environmental design strategies

Transportation /Infrastructure

- Infrastructure
- Transport Diagrams: Car, Bus, Train, Plane, Boat
- Relationship to country, cities, international
- Utilities Diagrams: Water, Gas, Electricity, Energy

Habitation

- Social + Cultural Context
- Population: Social mix Density- Who is living and working in the area?
- How does inhabited area looks like- google image, access, population, mix of uses, time of development, special character

- Education
- How do people live + work? Which professions? How do they commute? What do they like (food, activities)? Does this area have tourists? Where do they come from?
- People Movement- Where to people come from and go to?

Regulation

- Urban Plan of County as well as selected district
- Building Heights and Types
- Density FAR
- Type of Architecture
- Land uses: which functions

Trade

- Mix of uses; education, residential, offices, tourism
- Percentage agriculture
- Trading
- Movement of goods- Where do goods come from and go to?
- Industry

Ecosystem

- Landscape: Green and water areas: Flora, Fauna- Which plants + trees are typical? Which animals?
- Biodiversity
- Water
- Coast in Context
- Agriculture
- Mariculture

Current Projects

- What is happening in your area?
- Existing and projected urban plans, visions
- Competitions
- Research Projects
- Academic Projects, Involvement of Universities
- Social + Political reports and visions

Experts and Organizations, Politics etc.

- Make a list about everyone you consider relevant
- Social + Political reports and visions

Themes

- Conclude your data collection: What is the hottest topic for your side?
- Chose four themes and write a short summary with links + images.

MITTELMEERLAND URBAN PORTRAIT

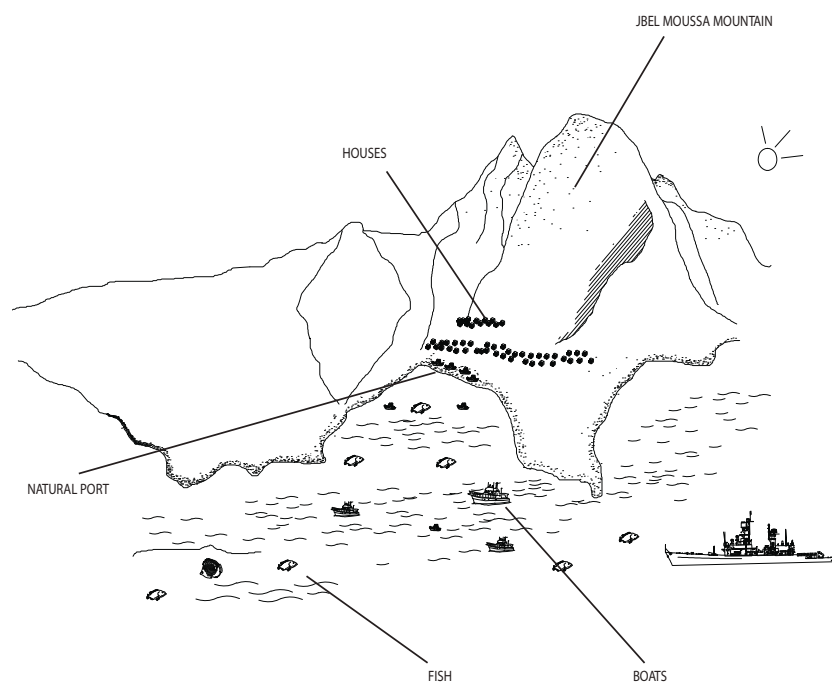
How to see?

We will study the local context: the Genius Loci understanding the sites and the specifics. What makes the location special? The “as found situation” is a key to describe the urban environment, one can learn about the lifestyle and the cultural identity of the site.

The participants will visit the site, collect and map as found situations, describe phenomenological and physical conditions: informalities, the relationship between building, street and sea, borders, history, vanacular climate solutions and the use of material, patterns of behaviour, routing, infrastructure, communication with locals, routines, traditions, observation of social interaction etc.

Tools:
Camera, Photoshop, CAD

Result:
This is individual work;
Each Participant will make a series of 3 photographs and 3 axonometric drawings.



MITTELMEERLAND NARRATIVE MAPPING

How to play?

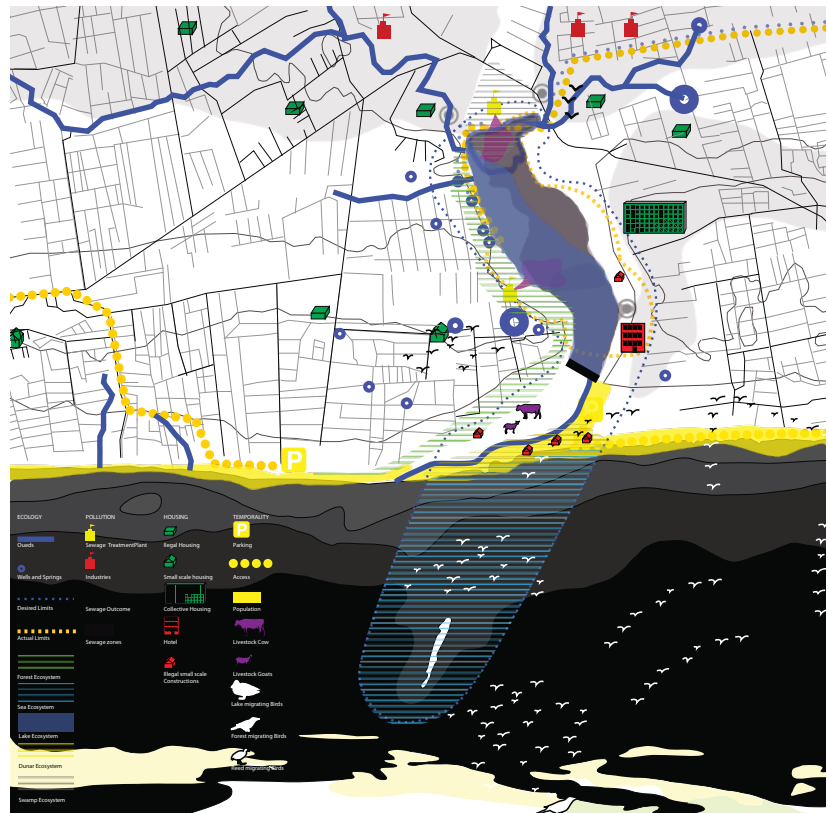
We will introduce narrative mapping techniques and methods of visualizing information, diagrams, photos and collages. We will deal with the question, how water can form spaces. Based on these observations each participant will identify conflicts of the area and develop a theme, then a narrative story, then an urban intervention that contribute to the cultural, contextual conditions of the site. The urban intervention shall consist of a composition of smaller specific interventions.

All what I know and all what I want to express goes into one map. This map relates different information at different scales and tells the story of the site, its physical, social, historical and environmental context.

All participants will develop together a single narrative drawing containing the story of the whole an area.

Tools:
Handsketches, Illustrator,
Auto-CAD, Photoshop

Result:
This is team work.
One single narrative map.



MITTELMEERLAND LANDSCAPE ECOLOGY

How to act?

We will move from the 2D mapping into 3D modelling of the landscape, insert visible and invisible phenomenological observations and physical conditions in this map and suggest interventions.

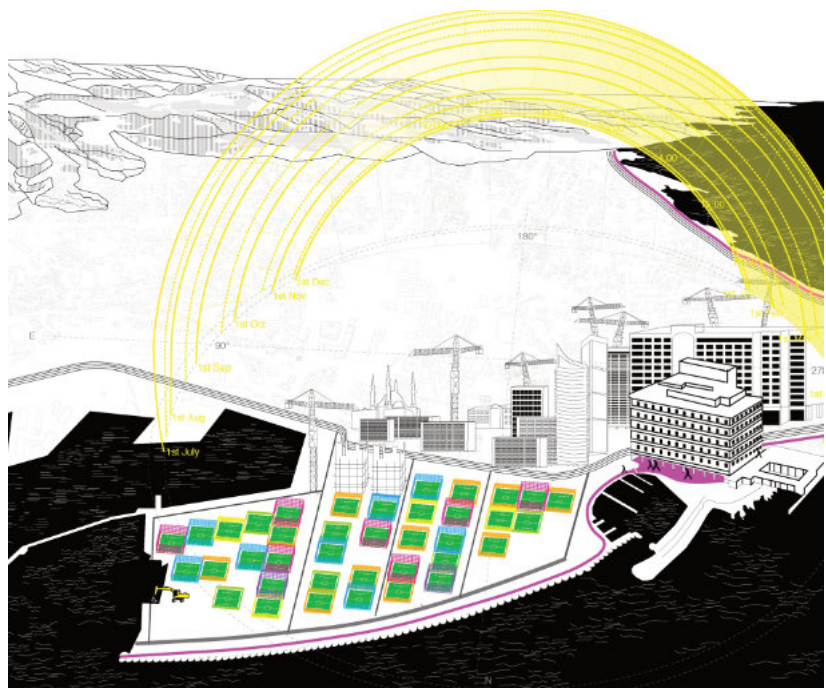
We will translate data and information such as climate, trade and migration into new visible layers and created new representations and interpretations of the area. We will insert spatial fragments and tell the story of the edge between Land of Water by using the technique of the wrong perspective. We will combine different view points and scales.

We will learn how to develop sustainable (ecological, social, political and economic) solutions for specific situations: Interventions, Solutions for existing questions, new typologies, appropriate functional programme for different qualities of water and coast.

All interventions interventions and observations are combined into a single perspectival drawing of the landscape seen from the sea.

Tools:
Illustrator, CAD, Photoshop

Results:
This is team work.
One single perspectival drawing.



MITTELMEERLAND IMAGINATIVE COLLAGES

How to tell?

We will show visions and critical statements with spatial images and focus on the three- dimensionality of the proposals.

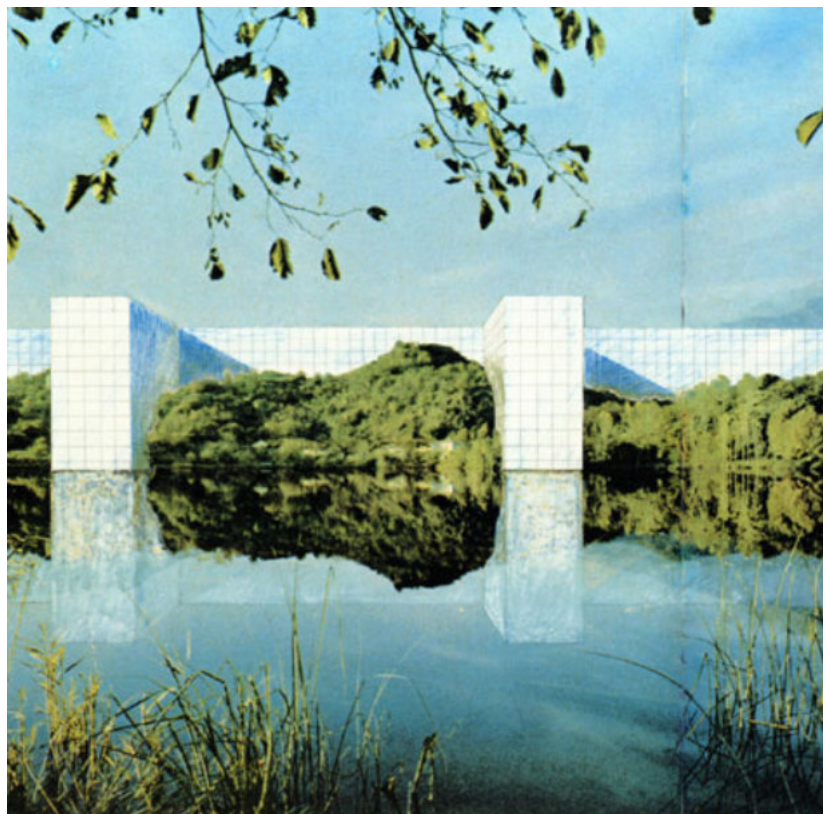
Each participant will make one imaginative collage to communicate her/his critical statement on the current cultural, political, economic or social situation, that has an impact on urban space.

Tools:

Illustrator, Photoshop,
Physical collages: Layers of
images on cardboard

Results:

This is individual work;
Each participant will make one
imaginative collage.



MITTELMEERLAND PEOPLE

PROGRAMME DIRECTORS

MEDINE ALTIOK

Architect, Zurich

www.medinealtiok.com

Medine Altiok is an architect and researcher, who graduated from the AA London. She runs her own practice in Zurich since 2010 and focuses on inter- cultural projects. She has currently finished a Muslim cemetery building in Hamburg. After many years of teaching, Medine initiated mittelmeerland.org, to investigate the transformation of the Mediterranean region with the motivation to develop a community perspective. She has been teaching Design Studios at ETH Zurich on Housing, at BILGI Istanbul on Transformation and has been programme director of the AA Visting School “Mittelmeerland” a research project about the Mediterranean, that started in 2011.

STEPHANIE TUNKA

Architect Partner (Foster+Partners)

Independent Researcher, London

www.fosterandpartners.com

Stephanie has an extensive experience designing and realizing architectural and urban projects dealing with a contextual approach, different urban densities and innovative environmental concepts worldwide. Her most important projects include Apple Park with 12,000 workplaces, Apple’s global headquarters in Cupertino and the housing strategies for the Masdar Project 01. Stephanie conducts research, lectures and teaches Internationally on new technologies, sustainable design and planning. She has been programme director of the AA Visting School “Mittelmeerland” a research project about the Mediterranean, that started in 2011.

TUTORS

IBAI RIGBY

Ibai Rigby is a British-Spanish architect, photographer, film maker and editor. He has worked on projects dealing with the conservation of the urban landscape and the development of cultural tourism in historic cities in the Islamic world. He has curated several exhibitions of the Historic Cities Programme for the Aga Khan Trust for Culture, including 2012 Venice Biennale. Ibai has been guest lecturer in Aleppo, Algiers, Barcelona and Sfax.

RITA ADAMO

Rita Elvira Adamo is an Italian architect and curator of Crossings Belmonte project and co-founder of Le Seppie.

FURTHER TUTORS *tbc*

local collaborators



Impressions from Algiers 2012

for more please see: www.mittelmeerland.org



Final Presentation at MAMA
Algiers 2012



Impressions from Alexandria 2013

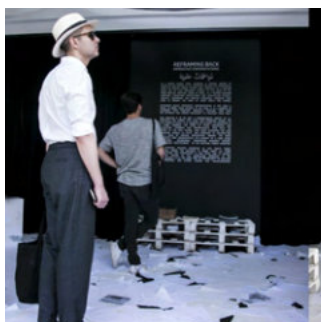
for more please see: www.mittelmeerland.org



Studiowork and Symposium
Alexandria 2013



IMPRESSIONS OF THE EXHIBITION AT THE EGYPTIAN PAVILLON VENICE BIENNALE 2016



Images: Egyptian Pavillon at Venice Biennale, 2016